

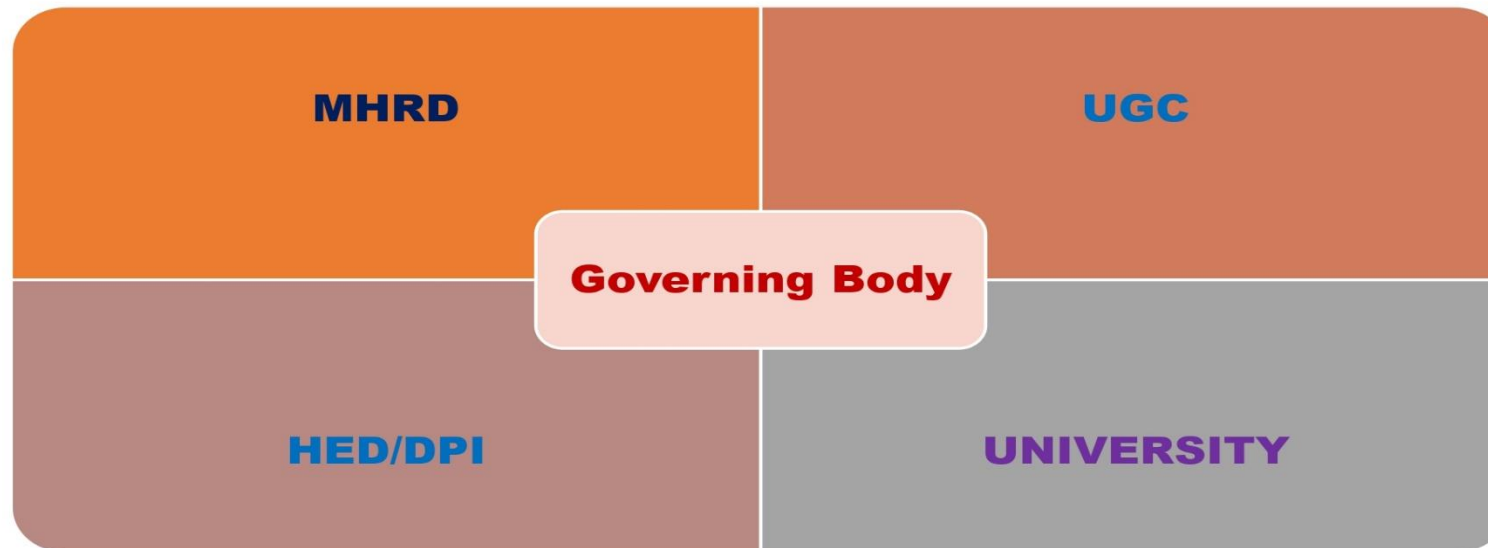


**SEVA BHARATI MAHAVIDYALAYA**  
**KAPGARI :: JHARGRAM**



**ESTD.: 1964**

The Governing Body, the apex policy making body of the college, has to abide by the rules and regulation of the Central, States, Autonomous bodies of higher education.



Website: <https://sbmahavidyalaya.ac.in/>



# SEVA BHARATI MAHAVIDYALAYA

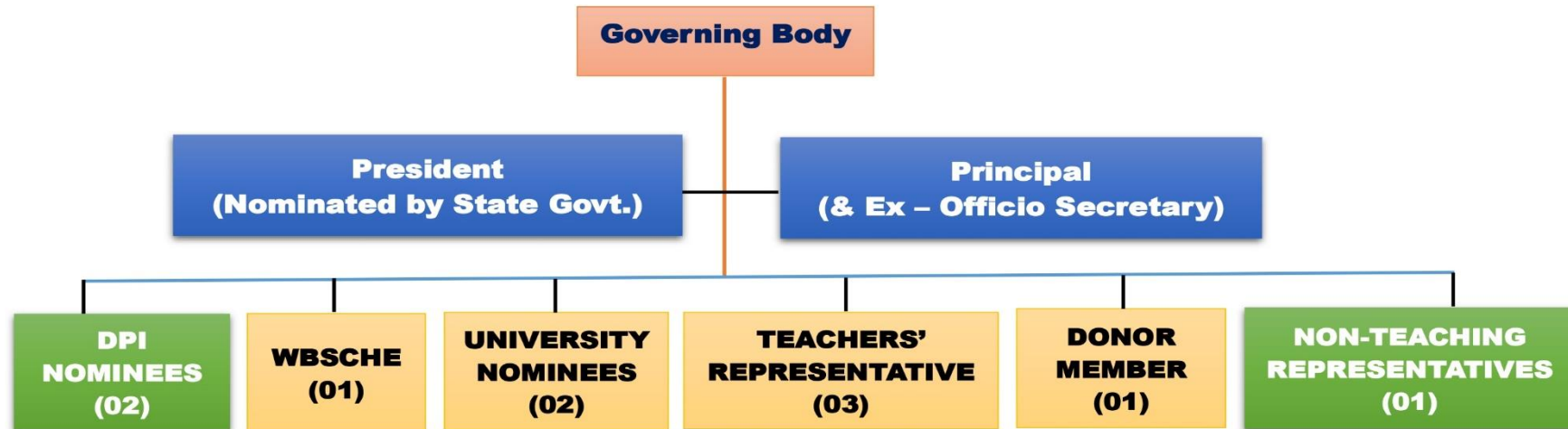
KAPGARI :: JHARGRAM

ESTD.: 1964



## Composition of the Governing Body

[As per the West Bengal Universities and College (Administration and Regulation) Act, 2017]



Website: <https://sbmahavidyalaya.ac.in/>



# SEVA BHARATI MAHAVIDYALAYA

## KAPGARI :: JHARGRAM

ESTD.:1964



### Organogram

